



In-Ovation® R by GAC

The Self-Ligation System of Choice

Over 2 Million Patients Treated... And Counting

In-Ovation R has been recognized as an industry leader for over a decade. Thousands of clinicians worldwide have trusted In-Ovation to treat their patients. The precision and quality built into these brackets offers repeatable success, practice efficiencies and beautiful results every time. See how far In-Ovation R can take you, your patients and your practice.

Finding the Extra 225 Hours Hidden In Your Schedule*

In-Ovation R self-ligating brackets offer you the luxury of faster, more infrequent visits from your patients. Whether you use this benefit to streamline your schedule for a less hectic day, bump up the bottom line by treating additional patients or even reassessing how you practice to enjoy more free time to pursue your passions, it's nice to be able to choose. Because once you start realizing all the time-saving benefits of the In-Ovation R brackets, you can really begin to manage your practice... and not the other way around.

Improve Your Bottom Line

In-Ovation R can offer you benefits that extend well beyond the practice. When you consider everything you can do with more hours in your day, the benefits can really start to add up. With an average savings of three hours chair time per case, In-Ovation R braces can add \$950 - \$1050 profit, per patient, to your bottom line.

Clinical Benefits		Benefits Beyond Clinical	
+\$350 average hourly profit	Improved patient satisfaction	Spend more time with your family	180 minutes saved per case
	Direct patient referrals	Play more golf	
	Additional GP referrals	Pursue your passions	
+ 3 hours per case	Extra billable hours	One extra day off a week	+ 150 patients
	Decrease number of total appointments per case	Travel	
	Increase time between appointments	Go sailing	
= \$1,050 extra profit!	Better time management	Volunteer	= 225 hours of chair time each year!
	More face time with your patient	Go fishing	
	Reduction in-office stress	Just relax and do nothing	

*Based on an average case load of 150 patients and an average 2 year treatment time.

Practice Advantages

The In-Ovation orthodontic systems are the result of a keen understanding of human physiology and orthodontic engineering. The compound contoured base of the In-Ovation R bracket is designed to provide a precise anatomical fit across the enamel surface of the tooth. The smooth swept tie-wings are engineered to minimize occlusal interference in order to increase patient comfort. In addition, the chamfered archwire slot is designed to reduce chair time by facilitating wire engagement and reducing the chance of archwire binding or crimping. This dedication to quality and attention to detail is infused into every product that carries the In-Ovation name.

Control

Interactive spring clip for control throughout treatment

Precision

True straight wire design for optimal, precise treatment options

Quality

Highly advanced manufacturing processes with over a decade of real-world repeatable success



Time

302.55 minutes vs 476.76 minutes

With In-Ovation* doctors realize a chairside time savings of approximately 3 hours per patient.



Months in Treatment

19.83 months vs 23.97 months

In-Ovation finishes equivalent cases approximately 4 months sooner than traditional brackets with ties.



Appointments

9.6 vs 16.26

In-Ovation averages 40% fewer appointments than traditional brackets with ties.

Patient Advantages

Today more than ever, patients are doing their part to better understand the options available to them. Savvy practices have come to recognize this as an opportunity, enabling you to offer the benefits of self-ligation as an adjunct to your talent, technique and reputation.

In providing a self-ligating option, you'll be able to offer your patients less chair time, fewer appointments and a cleaner, more esthetic appearance. In doing so, you'll be able to create a perceived (and potentially significant) point of differentiation between your practice and the other competing practices in the area.

Comfort

Low-profile and smooth surfaces offer enhanced patient comfort

Convenience

Fewer and shorter appointments mean better control over your daily schedule

Freedom

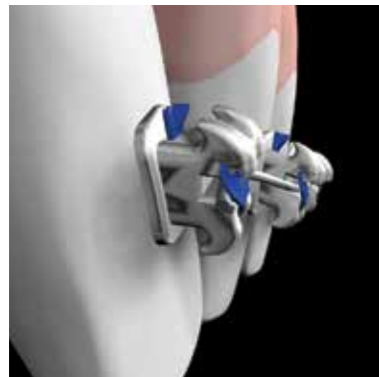
Elastomeric free treatment for longer appointment intervals and enhanced hygiene

*Jerry R. Clark, DDS, MS, Jack Gebbie, BS, Datatex Market Research Report Summary: Increasing Practice Efficiency and Profitability Using In-Ovation Self-Ligating Brackets, March, 2007. Datatex is a member of CASRO® - Council of American Survey Research Organizations

In-Ovation Means Interactive

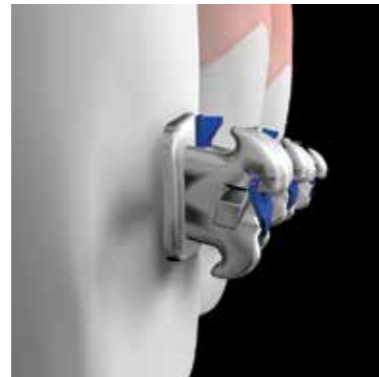
In-Ovation R provides you with the ability to start and effectively finish your treatment with one, simple system. Using the technique of your choice, In-Ovation R enables you to maintain the precise degree of control that you need for each phase of your patient's treatment. In-Ovation R's unique Interactive technology means you can choose the degree of engagement between the bracket and wire. It can be passive for leveling and aligning, expressive where control is realized and free-sliding is maintained, or active for controlled, optimal finishing.

Interactive Control



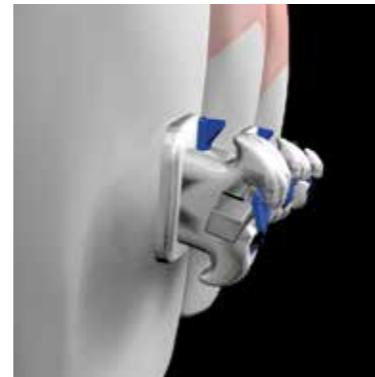
Passive Phase

Small, round wires slide freely, initiating the tooth movement process as the archwire gently levels the teeth and coaxes them into alignment.



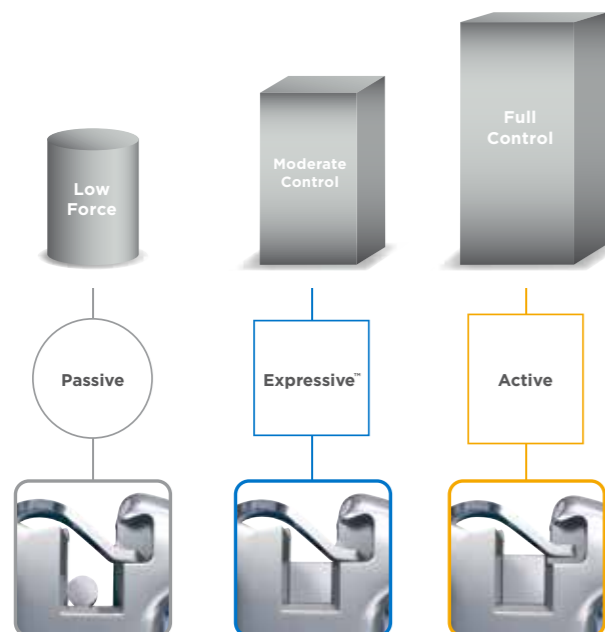
Expressive Phase

Square or rectangular wires are gently seated into the base of the slot without contacting the clip. Programming is expressed, rotations are corrected and space closures are completed.



Active Phase

Rectangular archwires extend beyond the slot to fully engage the clip, providing the active control necessary for functional finishing, uprighting of the roots and adjusting the torque.



Interactivity Guide

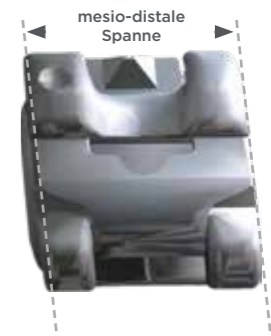
Archwire Sizes

	.018" Slot	.022" Slot
Passive	.014" .016"	.014"/.016" .018"/.020"
Expressive™	.016" x .016" .018" x .018"	.018" x .018" .020" x .020" .022" x .018"
Active	.016" x .022" .017" x .025" .018" x .025"	.018" x .025" .019" x .025" .021" x .028"

In-Ovation R Dedication to Detail

True Twin Design

Occlusal and gingival twin tie-wings offer an optimal mesial, distal span for achieving superior rotation control. The elimination of the elastomeric ligatures increase your inter-bracket distance.



Spring Clip

The self-ligating clip extends fully through the vertical channel in the bracket body, enhancing the structural integrity of the clip.



Full Slot Slip Coverage

The In-Ovation R clip provides full coverage across the entire slot for superior rotational control. This allows the clip to interact with the wire both on the mesial and distal, as needed, without the need for auxiliaries.



Easy Open Clip

The clip opens easily when pressure is applied occlusally to the v-notched clip at the gingival side of the bracket, using the engage R or similar instrument. The clip can be closed with an instrument or simple finger pressure on the incisal curve.



Slot Blocker

A patented slot blocker prevents the archwire from escaping from the slot and sliding up into the clip engagement channel.





Triple Chamfered Slot Wall

Slot walls are beveled outward, facilitating wire engagement and reducing the chance of the archwire binding or crimping.



Straight Wire Technology

In-Ovation R is a true straight wire appliance that features a compound contour base, torque in the base, programmed in/out control and level slot alignment.



Disto-Gingival Dimple

A color code on the disto-gingival tie-wing provides immediate identification of the tooth for which the bracket was designed.



Base Design

An 80 gauge single mesh, compound contoured base provides a precise anatomical fit. The Standard Palmer Notation laser etched into the mesh facilitates bracket management.



Vertical Scribe Line

A scribe line on the bracket face aids positioning by providing a convenient reference for orienting the center line of the bracket with the facial axis of the clinical crown (FACC).



Smooth Swept Tie-Wings

Smooth, swept tie-wings help to reduce occlusal interference while increasing patient comfort. Adequate undercuts allow easy anchoring for elastic chains or the fastening of color ties at the patient's request.

Case Study

Class II Crowding/Midline Discrepancy

- 14-year-old male
- Blocked canine
- End-on molar relationship
- Midline discrepancy
- In-Ovation R appliance was used with extractions of maxillary first pre-molar and second mandibular pre-molar
- Minimum anchorage mechanics used
- Treatment time: 20 months



Initial intraoral photos showing maxillary right canine ectopically positioned, end-on molar and canine relationship and maxillary midline off to patient's right side.



Intraoral photos at the time the In-Ovation R appliance was placed with an upper and lower .014" Sentalloy archwires. Initial alignment was done in 7 months through a sequence of three archwires: .014" Sentalloy, .018" Sentalloy and .020"x.020" Bioforce.



Finished case. Proper intercuspation, Class I molar and canine with proper overjet and overbite. Minimum anchorage mechanics allowed maintaining maxillary and mandibular incisors inclination while protracting mandibular molars to a Class I relationship. Treatment time: 20 months

Case courtesy of Antonino G. Secchi, DMD, MS Assistant Professor of Orthodontics and Clinical Director of the Department of Orthodontics at the University of Pennsylvania. Private practice Philadelphia, PA.

GAC's In-Ovation® R



The Dental Solutions Company

Dentsply Sirona is the world's largest manufacturer of professional dental products and technologies. We create industry-leading positions and platforms across consumables, equipment, technology, and specialty products. We are committed to introducing new, innovative products and complementary, end-to-end solutions to drive better, safer and faster dentistry.

To learn more, visit us online at dentsplysirona.com.

Dentsply GAC Europe
1 rue des Messagers
37210 Rochecorbon
France

©2016 Dentsply GAC Intl.
All Rights Reserved