

Clinical applications of  
miniscrew in orthodontics

**OCTOBER 10 – 11, 2025**

**ISPRINGEN**

*Germany*

**D**  
DENTAURUM  
1886



*“Quality and  
innovation form  
together the  
cornerstones  
for sustainable  
progress and  
excellent  
performance.”*

Knowledge connects, knowledge creates trust, and knowledge has been an important pillar in the many years of our company's existence – since 1886.

“Engineered and made in Germany” is the motto we passionately live by at our company headquarters in Ispringen in the Black Forest where more than 8500 brand products are developed and produced in our highly complex, modern production facilities.

As one of the few manufacturers and full-range providers, we set standards in more than 130 countries worldwide in the fields of orthodontics, dental prosthetics, implantology and ceramics.

We are therefore particularly delighted to show you our highly modern production facilities in an exclusive company tour. You will have the opportunity to experience our innovative technologies and high-quality products at first hand. From a product's very beginning to its manufacture – we will show you every step of the way to success.

Learn how to deepen your knowledge and use our products more effectively in individualized product workshops with experts. This will help you to optimize the treatment you offer and the procedures you take.

We are looking forward to welcoming you to Dentaaurum and sharing our passion for quality and innovation.

Mark Stephen Pace  
MANAGEMENT BOARD Claudia Stöhrle  
Ralph Dittes DENTAURUM



## COMMITTED TO SUSTAINABILITY – OUT OF CONVICTION

Dentaurum was one of the first companies to anchor sustainability firmly into its corporate philosophy by its own conviction in 1989. Since 1994, the company has continually been DIN EN ISO 14001 and EMAS-certified. We support selected social and sustainable projects since it would be shortsighted to aim for economic success without taking the environment into consideration.

Some 15.000 m<sup>2</sup> of Dentaurum's company grounds are covered by a large wooded area which has been left untouched during building extensions over the past few years.

Our buildings were each built to conform with the highest ecological standards valid at the time, and a large part of the roofs is covered with greenery. Where light is needed, LEDs are installed with intelligent control systems with dimmers, motion detectors and timers. Primary energy consumption is reduced by utilizing waste heat and the latest control technology. We value also the concept of the water cycle and recycle service and rain water.





# PROGRAM

---

08:45    **Welcome & group photo**

---

09:00    **Guided company tour through our production**

---

10:30    **Coffee break**

---

10:45    **Workshop**  
**Introduction tomas®-pins and hands-on training tomas® insertion in bone block**  
Dr. Fady Hussein Fahim

---

12:00    **Lunch break**

---

13:00    **Workshop**  
**Mechanics with miniscrews and hands-on training palatal tomas® insertion using contra-angle on typodont**  
Dr. Fady Hussein Fahim

---



FRIDAY, OCTOBER 10, 2025

---

14:45    **Coffee break**

---

15:00    **Workshop**  
**tomas®-pins for incisor intrusion to correct deep bite and hands-on bonding L-shaped wire from cross-slot head tomas®-pin to palatal surface of maxillary first molar (indirect anchorage)**  
Dr. Fady Hussein Fahim

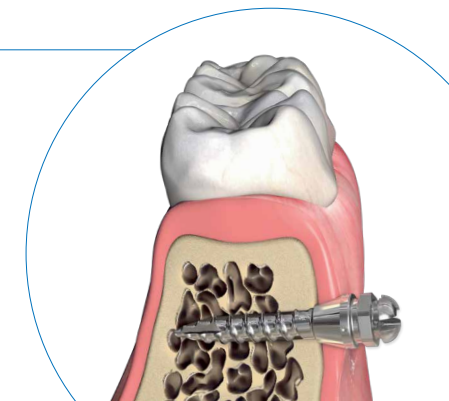
---

17:00    **End of course**

---

18:30    **Dinner**

---



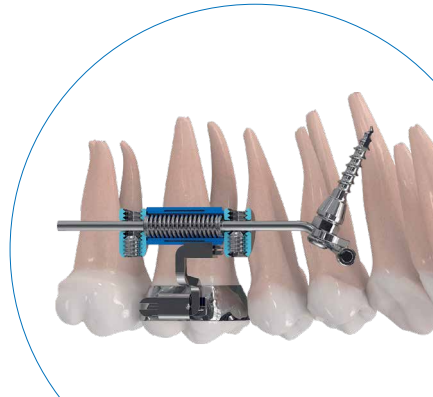
# PROGRAM

08:30	<b>Workshop</b> <b>Molar intrusion and uprighting</b> Dr. Fady Hussein Fahim
10:00	<b>Coffee break</b>
10:15	<b>Hands-on</b> <b>Training interradicular insertion &amp; installation tomas®-uprighting spring on model</b> Dr. Fady Hussein Fahim
12:15	<b>Lunch break</b>
13:00	<b>Workshop</b> <b>Maxillary molar distalization using tomas®-pins on class III cases</b> Dr. Fady Hussein Fahim



SATURDAY, OCTOBER 11, 2025

14:15	<b>Coffee break</b>
14:30	<b>Workshop</b> <b>Opening and closing the amda® spring (not adapting the full amda®)</b> Dr. Fady Hussein Fahim
16:00	<b>End of course</b>



## CLINICAL APPLICATIONS OF MINISCREWS IN ORTHODONTICS

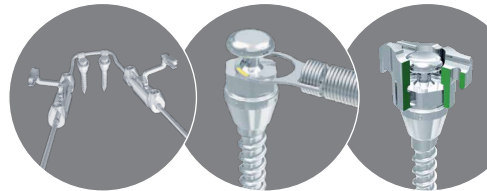
Orthodontics in practice shown by Dr. Fady Hussein Fahim in workshops for Dentaaurum worldwide – with special hands-on sessions – now offered for participants from Europe. Learn from the skills of a renowned speaker showing his experience live.

### Lectures:

- tomas®-pins – not just a pin, it's a system
- How to be more successful with tomas®-pin insertion?
- Antero-posterior space closure mechanics with miniscrews
- Vertical correction mechanics with miniscrews
- Maxillary molar distalization/mesialization using amda®
- Transverse correction using hybrid hyrax®  
(MARPE = mini-screw assisted rapid palatal expansion): pin-first/pin-last approach

### Content of practice:

- tomas® insertion in bone blocks
- Palatal tomas® insertion using contra-angle on typodont
- Molar tomas®-uprighting spring
- Bonding L-shaped wire from cross-slot head tomas®-pin to palatal surface of maxillary first molar (indirect anchorage)
- Placing impression caps on tomas®-pins
- Opening and closing the amda® spring (not adapting the full amda®)



## SPEAKER

### DR. FADY HUSSEIN FAHIM

Lecturer at Orthodontic Department Cairo University

He is running his own private practice in Cairo (Perla Dental Clinic)

A member of the American Association of Orthodontists, and Fellow of World Federation of Orthodontists

He is currently the director of M Orth RCSEd UK training program at Perla Dental Training Centre Egypt

Dr. Fady is a Clinical Consultant of Dentaaurum

2022: Trained by the master of Onyxceph Dr. Björn Ludwig

2013: Fellowship in Orthodontics from Royal College of Surgeons of Edinburgh, UK

2012: PhD doctorate degree in Orthodontics (Alveolar CLP distraction)





# COMPANY TOUR

FRIDAY, OCTOBER 10, 2025 · 09:00 – 10:30

In an exclusive guided tour, we will show you more on the latest technologies and processes in our production facilities – from state-of-the-art machines to innovative materials, we place emphasis on excellence.

Get to know the Dentaureum family during the tour – the knowledge that has been acquired over the years is reflected both in the quality of our products and the services we offer. As a customer of Dentaureum, you benefit at every level from competent consultation: pragmatic and individual. Our knowledge is at the heart of the infrastructure which is tailored to your needs.



# DETAILS

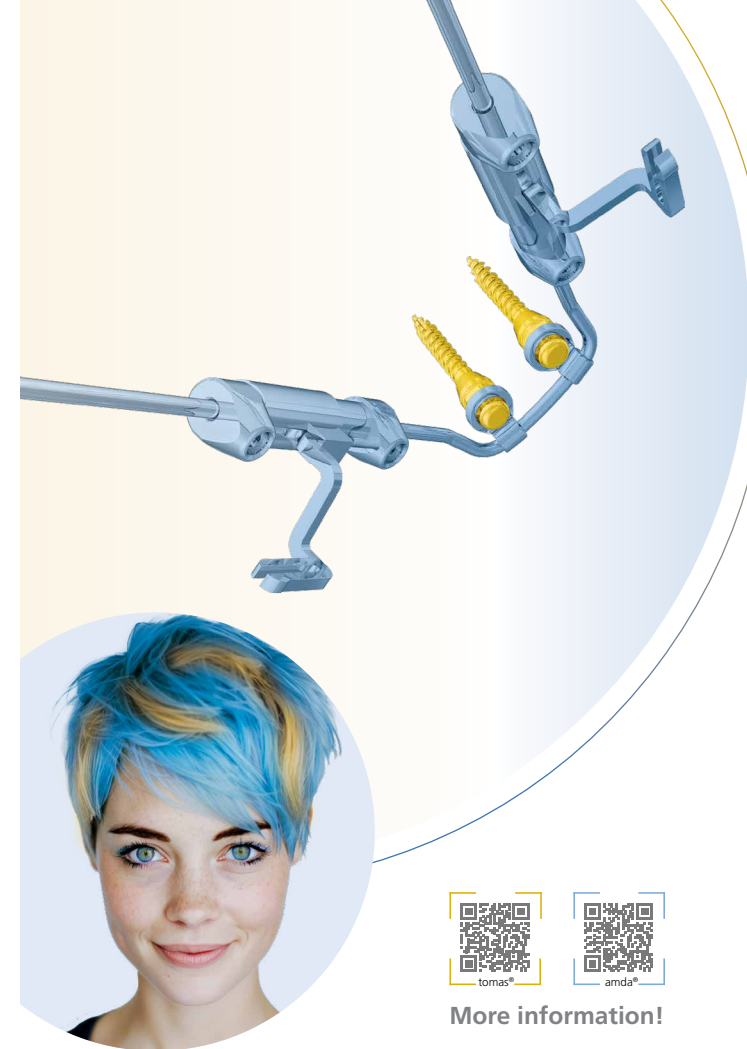
**DATE** Workshop: October, 10 – 11, 2025  
Friday, 08:45 – 17:00 · Saturday, 08:30 – 16:00  
  
Dinner: Friday, October 10, 2025 \* · 18:30

**COURSE FEE** 500.00 € (+ VAT)

**LOCATION** CDC – Dentaureum Ispringen · Turnstr. 31 · 75228 Ispringen · Germany

**LANGUAGE** English

\* Dinner is included in the course fee.  
Please let us know if you do not wish to take part.



## THE IDEAL COMBINATION

Find out all about the complete system for almost every indication!  
The systems that have proven their worth year after year

- tomas® system for skeletal anchorage and
- amda® distalization appliance

offer extended possibilities for modern palatal treatment.

tomas®-pin EP & amda® are optimally coordinated. They can be quickly and easily placed and are practical and hygienic for the patient.

Request your individual offer now:  
[verkauf@dentaureum.de](mailto:verkauf@dentaureum.de) · +49 72 31 / 803-210



More information!

**D**  
DENTAUREUM  
1886

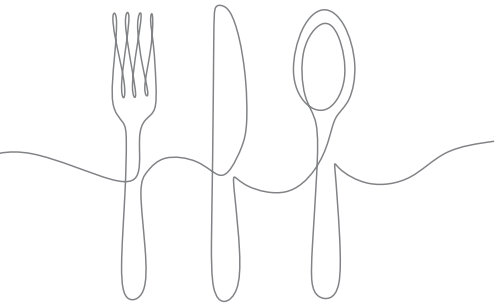


# DINNER

FRIDAY, OCTOBER 10, 2025 · 18:30

You are invited to a dinner together in Pforzheim.

Enjoy an evening in a relaxed atmosphere with good conversation and an inspiring exchange with the speaker and colleagues from all over the world.



# HOTELS

Here you will find some hotel recommendations. Please book your room by yourself and note that the accomodation costs are not covered.



IBIS STYLES PFORZHEIM

Address: Bleichstraße 17 · 75173 Pforzheim · E-Mail: [ha9f7-re@accor.com](mailto:ha9f7-re@accor.com)



PARKHOTEL PFORZHEIM

Address: Deimlingstraße 32-36 · 75175 Pforzheim · E-Mail: [reservierung@parkhotel-pforzheim.de](mailto:reservierung@parkhotel-pforzheim.de)



# PFORZHEIM

“Welcome to Pforzheim, the City of Gold” – where the traditional and the modern meet! Situated at the gateway to the Black Forest, Pforzheim is known not only for its golden past as the center of the German jewelry and watch industry, but also for its vibrant culture.

Dive into the glittery world of precious stones and fine metals. The Jewelry Museum in Pforzheim is a modern exhibition center offering a unique experience with its presentation of jewelry artistry in all its glory. You can not only admire the exquisite pieces of jewelry, but can also discover the craftsmanship behind their production.

The idyllic Enzaugen park along the river Enz is home to a further highlight: the Gasometer, located in an impressive listed industrial building which now exhibits art and culture. Experience the fascinating panorama exhibitions.



CONTACT  
**DENTAURUM**

Dentaurum GmbH & Co. KG



Turnstr. 31  
75228 Ispringen · Germany



seminar@dentaurum.com  
www.dentaurum.com



+49 72 31/803-470



ONLINE SHOP  
[SHOP.DENTAURUM.COM](https://shop.dentaurum.com)